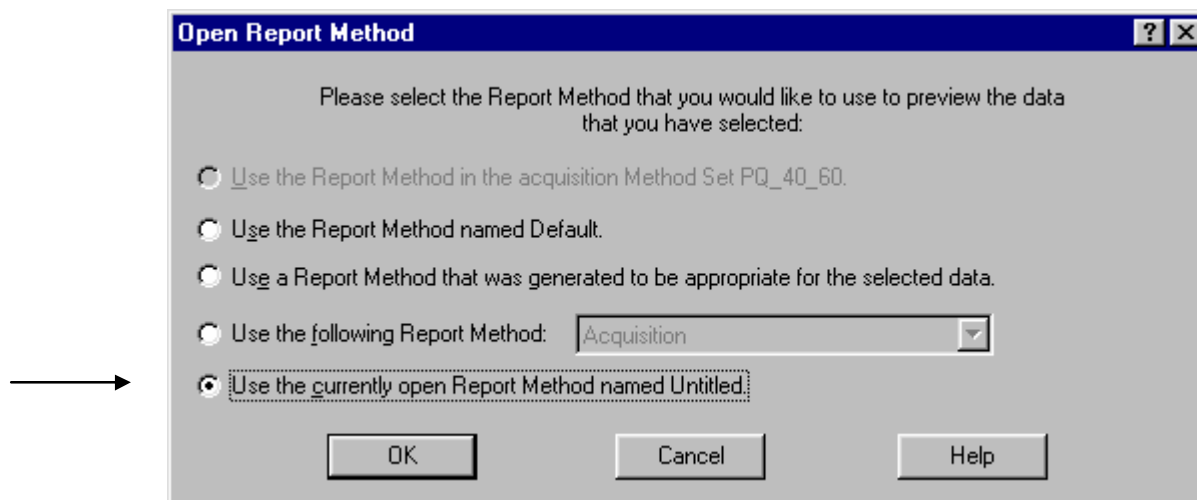


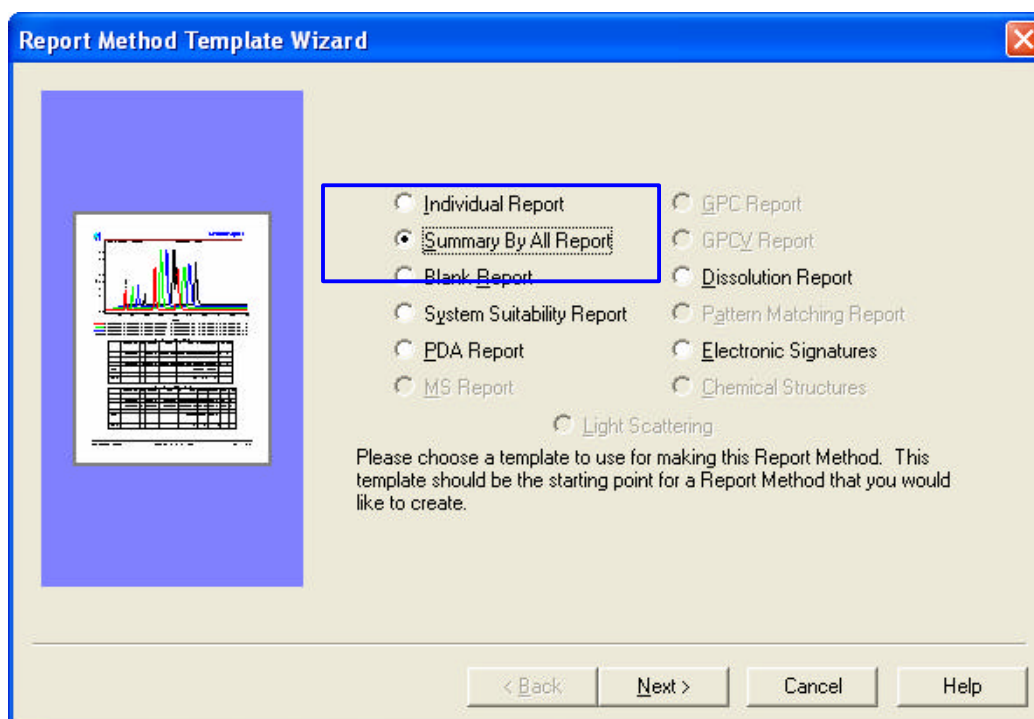
Precision and Accuracy: Summary Reports

Precision is verified by injection of replicates of the sample, and calculating the % RSD (relative standard deviation) of the area and/or retention times values. The samples are processed, and the results are saved. The replicate results are selected and the *Preview/Publisher* tool is used to create a Summary report. The *Preview/Publisher* tool brings about the following window

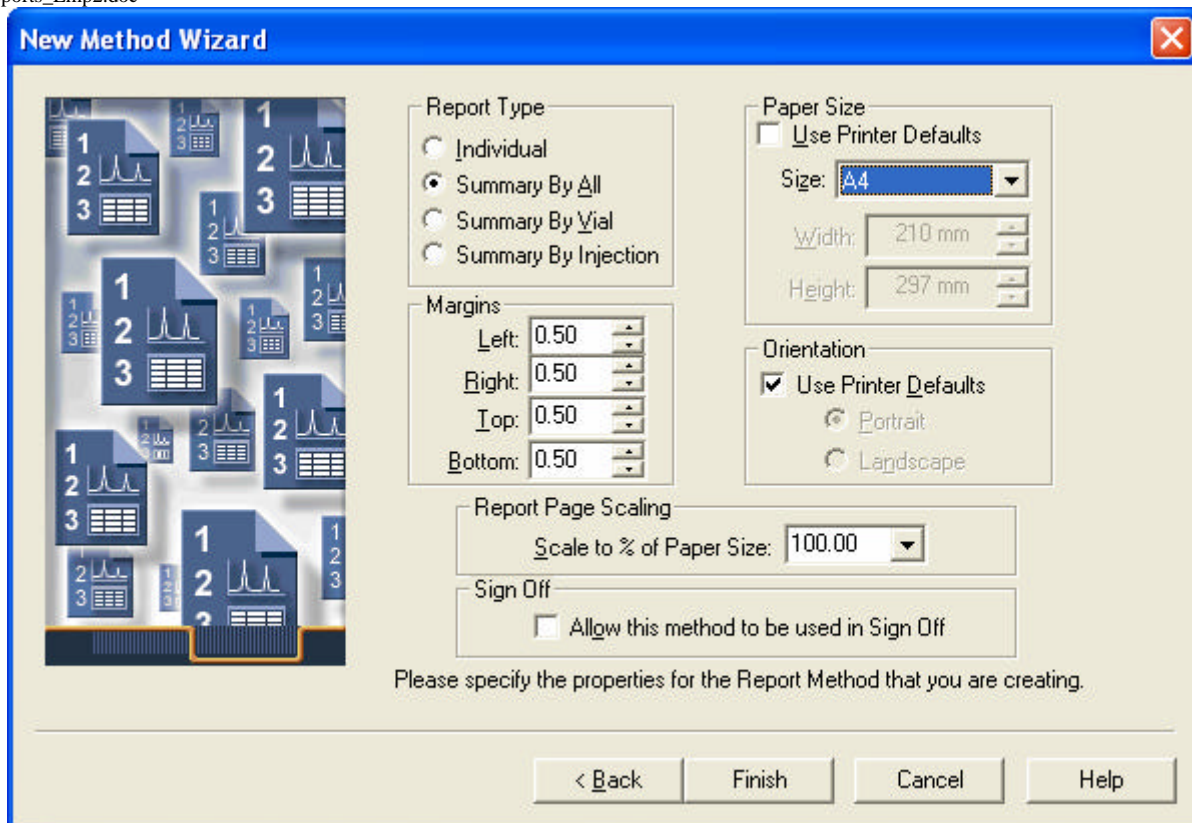


An easy place to start is the Report Wizard, which is accessed through the “*Use the current open Report Method named Untitled*”.

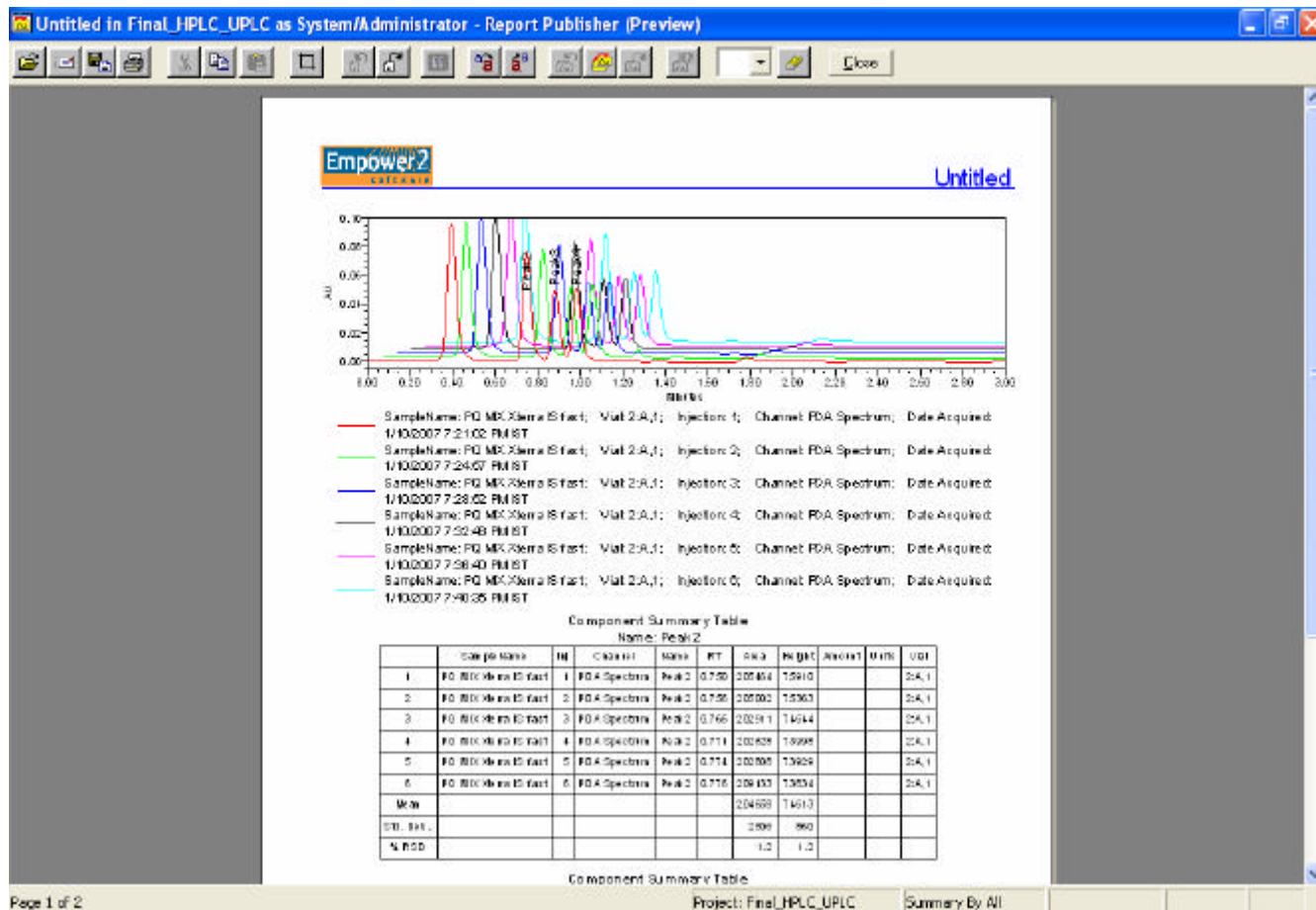
A blank page is opened and then the wizard starts by using: “*File > New > Use Report method wizard*”. Select the Summary by All method and A4 for the page setup.



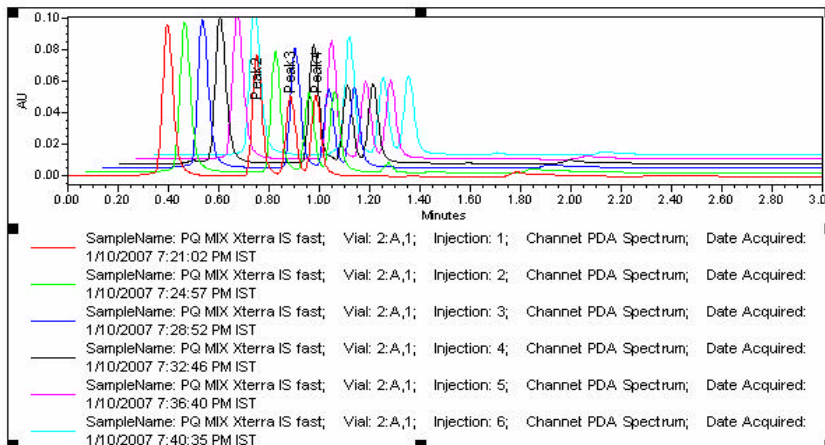
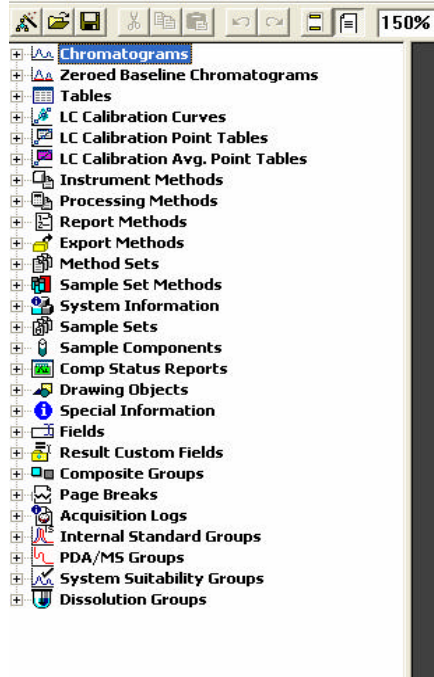
Click->next to get the following window, where the method properties are set



The default *Summary by All* report shows overlaid chromatograms shifted as in 3 dimensional plot, and a summary table that gives the RSD results of the time and area.



To change anything just click the *Close* button, and go to Edit mode.



Component Summary Table
Name: Peak2

	SampleName	Inj	Channel	Name	RT	Area	Height	Amount	Units	Val
1	PQ MIX Xtterra IS fast	1	PDA Spectrum	Peak2	0.750	205464	75910			2:A,1
2	PQ MIX Xtterra IS fast	2	PDA Spectrum	Peak2	0.750	205002	75363			2:A,1
3	PQ MIX Xtterra IS fast	3	PDA Spectrum	Peak2	0.766	202911	74644			2:A,1
4	PQ MIX Xtterra IS fast	4	PDA Spectrum	Peak2	0.771	202628	73998			2:A,1

You can either delete the chromatogram (just hit the delete key) it or click on it twice to change the overlay properties. To show the 2D overlay just go to the overlay tab and un-check the *Use the Z-axis Plotting*.

To change the *Summary Table*, click on it twice and get the following window:

Add and delete columns in the table

Prepare a specific summary report

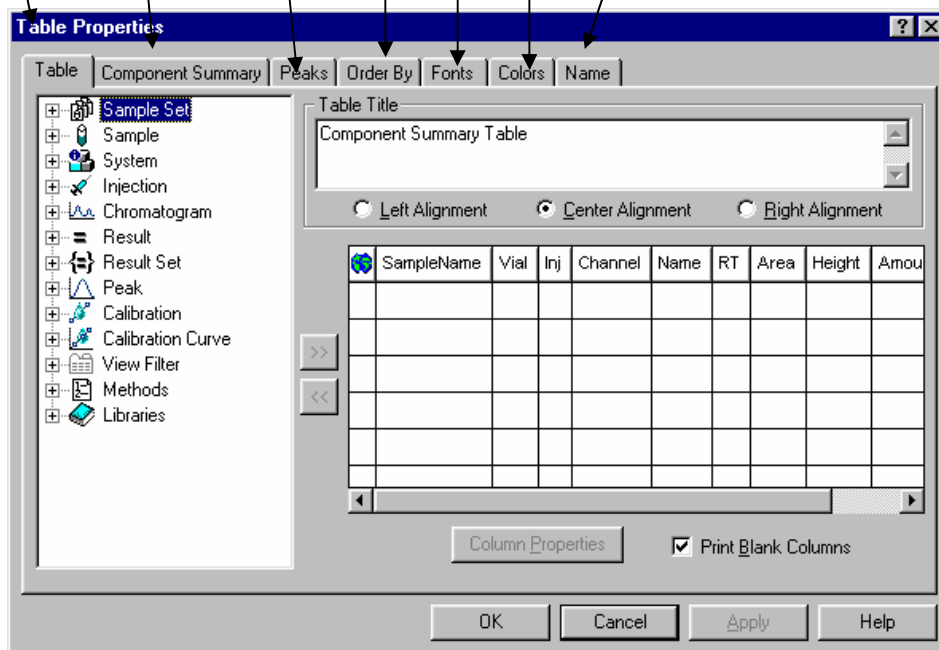
Set which peaks to show
(known, unknown, missing etc.)

Set the order
and the grouping properties

Set the fonts and text size

Set the colors of data

Name the element and save it to data base



To set the summary parameters of specific columns, select it, and then the “*Column Properties*” button is highlighted. Click it, and the following window appears:

Summary Function	Min Limit	Max Limit	Width
1 Mean			10
2 Std. Dev.			10
3 w. P.D.			10

The title of the column can be edited here (use *cntr+2ndEnter* to get a second line in the title) as well as the precision (digits) and the format (Exponential or not). At the bottom, there are summary functions to set too.