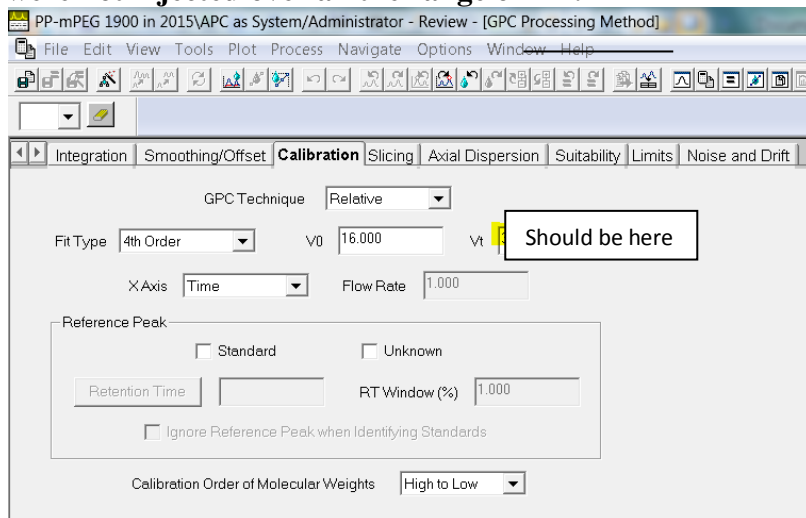
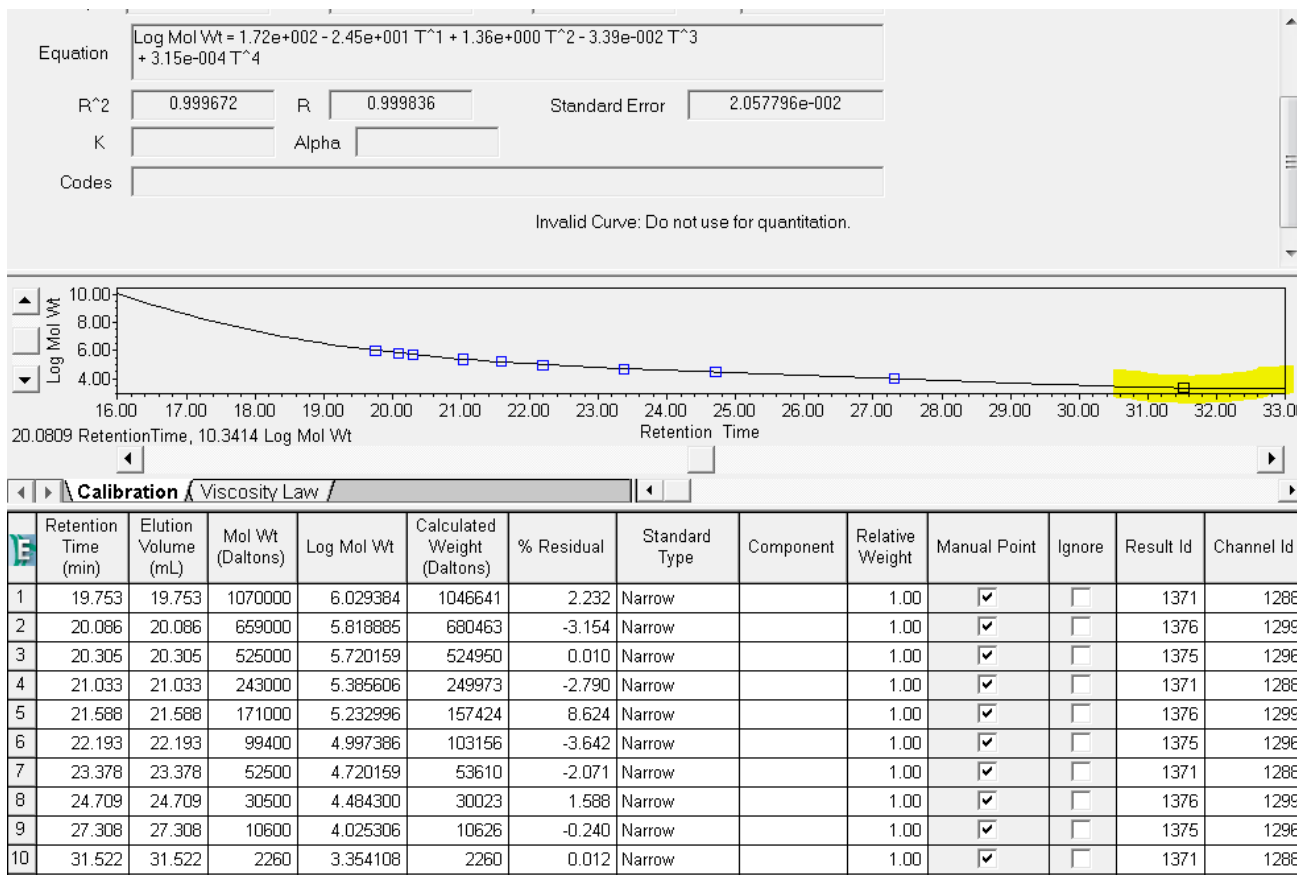


Setting GPC Processing Method properly for multi-modal distributions in Empower

- In the Processing Method Calibration: V0 and Vt times need to be real Total Exclusion time and Total Permeation time respectively** to allow the calibration curve to be extrapolated further to these times and calibrate samples, **even if the Narrow Standards were not injected over all the range of RT.**



However, even if the curve is extrapolated, the fit type must be selected properly not to have a slope=0 as shown in this calibration (Fit type=4)



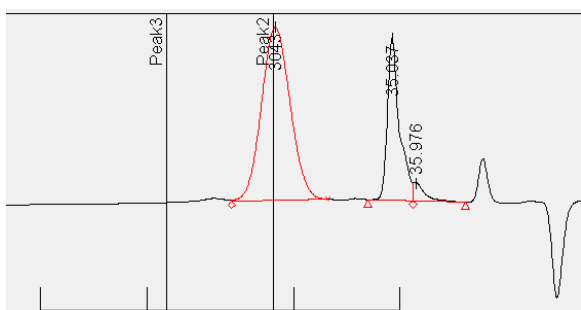
- 2) **Slicing Table should include ALL peaks** that appear in the unknown's chromatogram to be recognized by the software as peaks for calculations of MW distribution:

PP-mPEG 1900 in 2015\APC as System/Administrator - Review

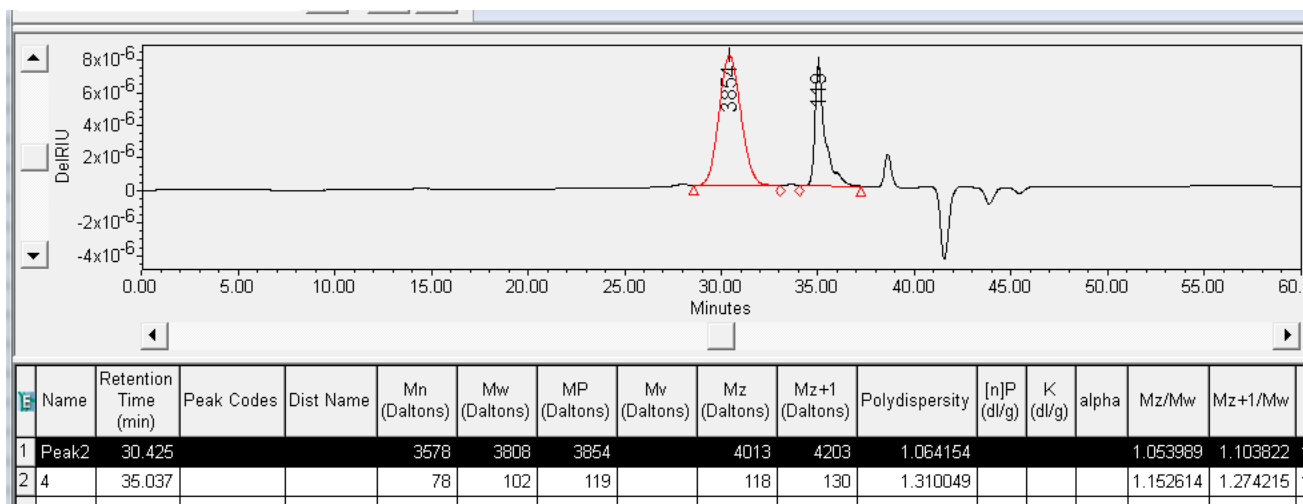
File Edit View Tools Plot Process Navigate Option

Integration Smoothing/Offset Calibration **Slicing** Axial

	Name	Peak Label	Retention Time (min)	RT Window (min)	Peak Match	3D
1	Peak1		26.151	5.000	Closest	
2	Peak2		30.349	5.000	Closest	
3	Peak3		35.000	5.000	Closest	
4	Peak 4		36.000	5.000	Closest	



This is how the results should look like when these parameters are set properly



I recommend to start with the “Traditional” type of integration and use Apex Track only if chromatogram is too complex.

Shoulders of peaks cannot be analyzed optimally.