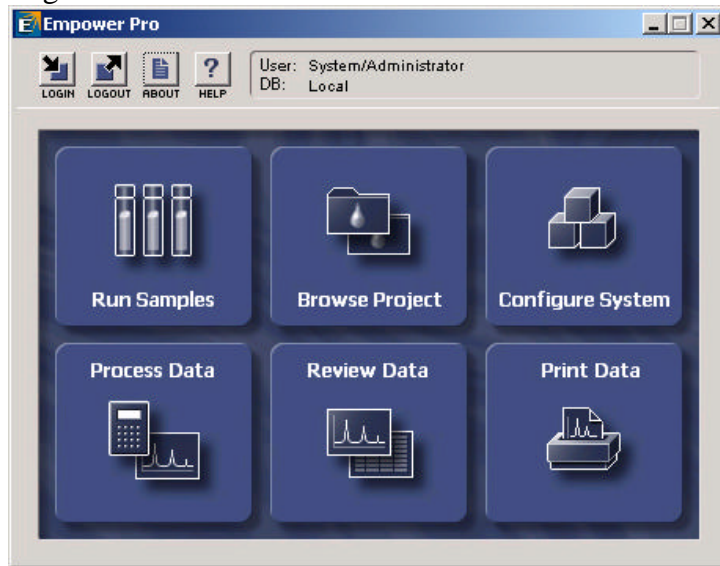
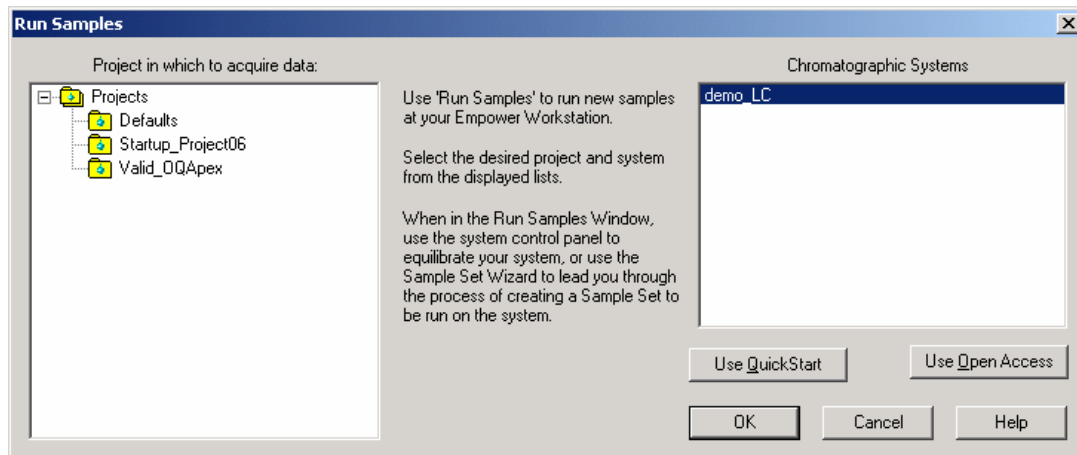


Run Samples

Open software
Login

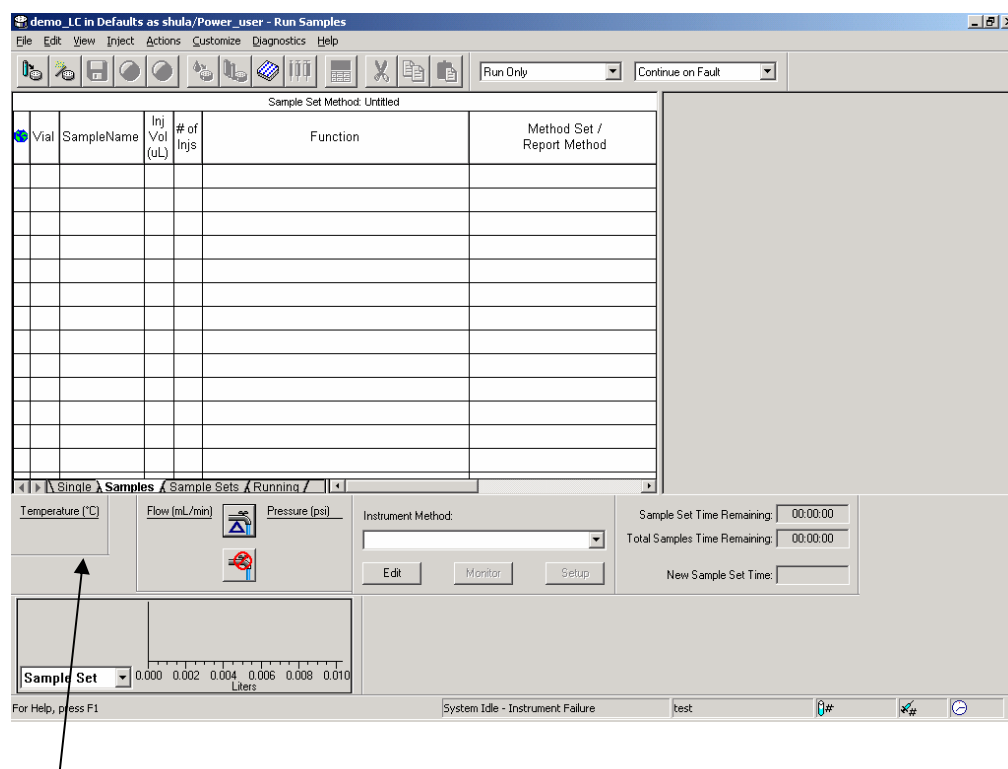


Click on *Run Samples*, select HPLC system on right, project on left,



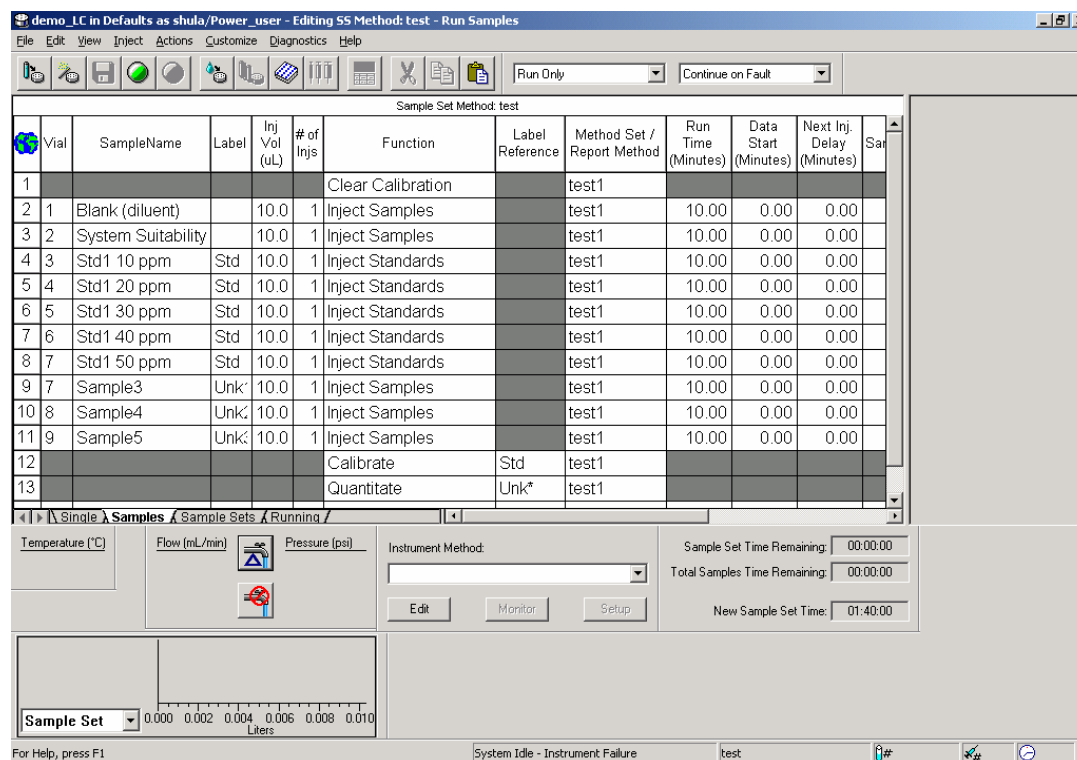
Click OK

The "Run Samples" Window:

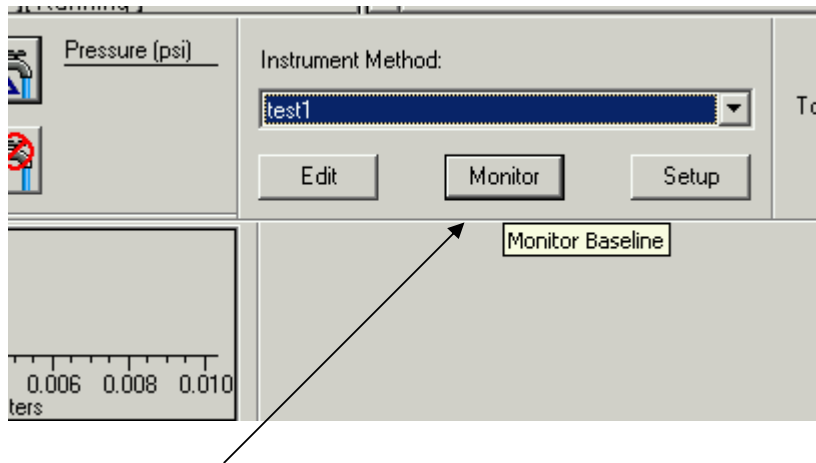


Feedback from Instrument

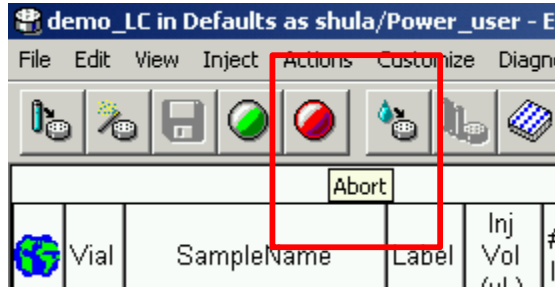
Create a *Sample Set Method* and save it: File->Save Sample Set Method as



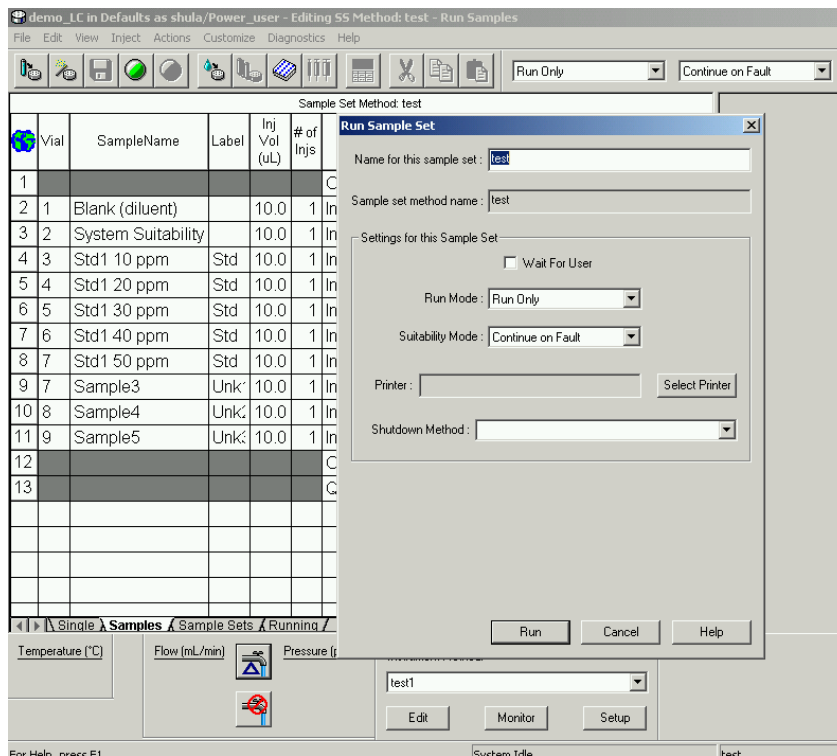
Before injecting any sample, check the system's status of equilibrium. Select the instrument method and monitor baseline:



When baseline is stable click on abort:



Click on the green icon to run the sample set:



Click on "Run"

The sample set starts to run and moves to the "Running" window. The red lines are those that were already injected. On the right-hand side the chromatogram will appear.

The screenshot displays the Empower software interface. At the top, the title bar reads "demo.LC in Defaults as shula/Power_user - Run Samples". Below the title bar is a menu bar with "File", "Edit", "View", "Inject", "Actions", "Customize", "Diagnostics", and "Help". A toolbar contains various icons for file operations and control. Below the toolbar, there are two dropdown menus: "Run Only" and "Continue on Fault".

The main area features a table titled "Active sample set : test". The table has the following columns: "Vial", "SampleName", "Inj Vol (uL)", "# of Injs", "Function", and "Method Set / Report Method". The data rows are as follows:

Vial	SampleName	Inj Vol (uL)	# of Injs	Function	Method Set / Report Method
1				Clear Calibration	test1
2	Blank (diluent)	10.0	1	Inject Samples	test1
3	System Suitability	10.0	1	Inject Samples	test1
4	Std1 10 ppm	10.0	1	Inject Standards	test1
5	Std1 20 ppm	10.0	1	Inject Standards	test1
6	Std1 30 ppm	10.0	1	Inject Standards	test1
7	Std1 40 ppm	10.0	1	Inject Standards	test1
8	Std1 50 ppm	10.0	1	Inject Standards	test1
9	Sample3	10.0	1	Inject Samples	test1
10	Sample4	10.0	1	Inject Samples	test1
11	Sample5	10.0	1	Inject Samples	test1
12				Calibrate	test1
13				Quantitate	test1

Below the table, there is a navigation bar with "Single", "Samples", "Sample Sets", and "Running" tabs. The "Running" tab is active. Below the navigation bar are control panels for "Temperature (°C)", "Flow (mL/min)", "Pressure (psi)", and "Instrument Method" (set to "test1"). There are "Edit", "Monitor", and "Setup" buttons. At the bottom, there is a status bar with "For Help, press F1", "Sample Set - Setting Up", "test", and some icons.