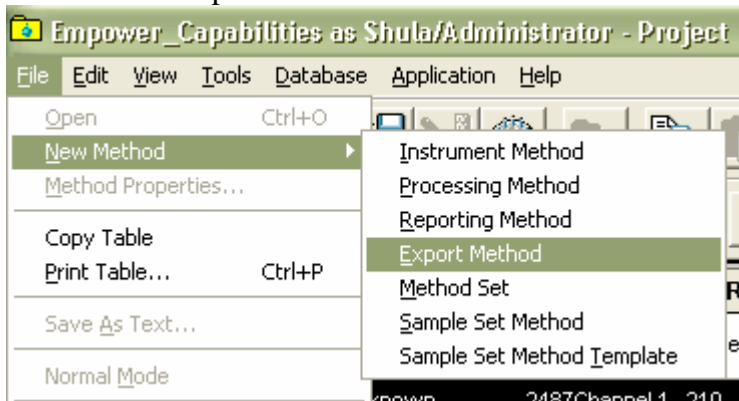
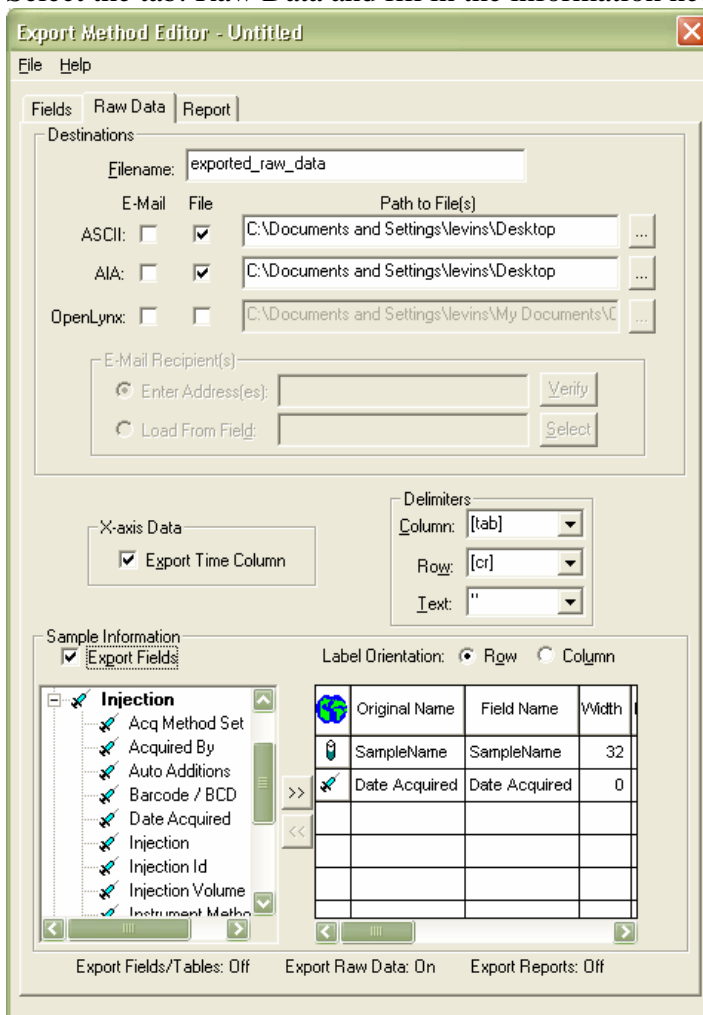


EXPORTING RAW DATA in Empower

1. Create an Export method:



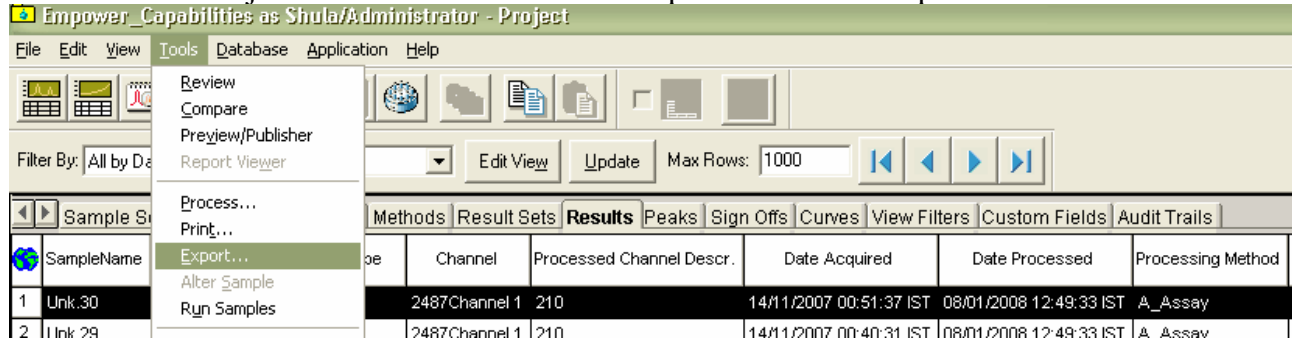
Select the tab: Raw Data and fill in the information needed.



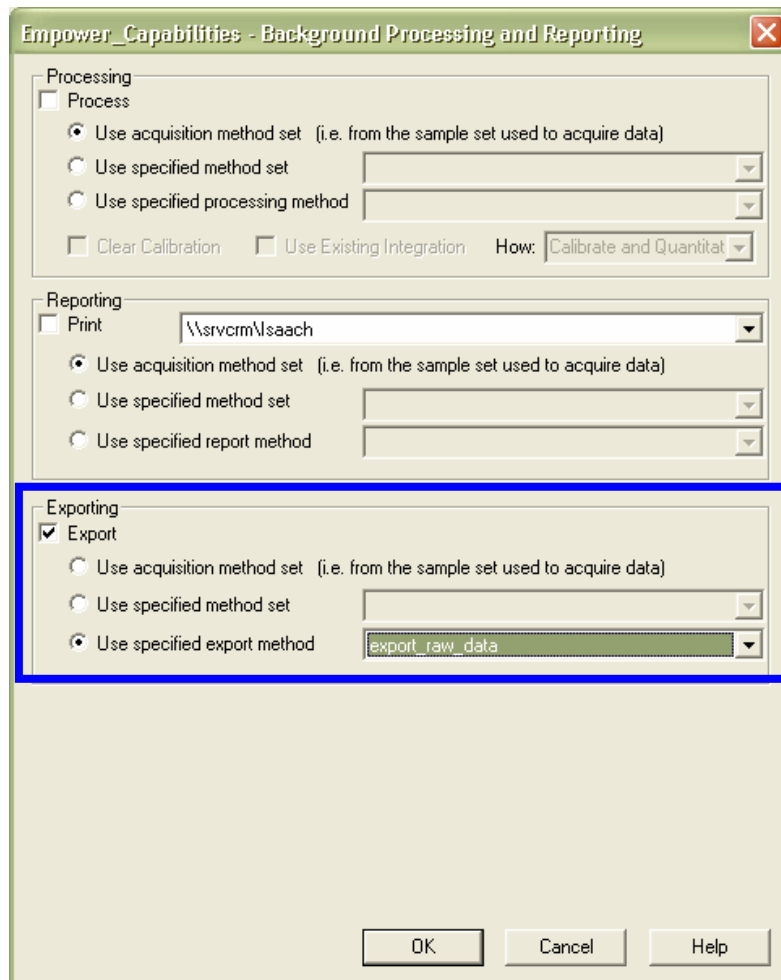
You can create either a tabulated text or cdf file (AIA) which is universal and can be imported into other chromatographic data software.

You have to provide a file name and location.
Save the method and exit.

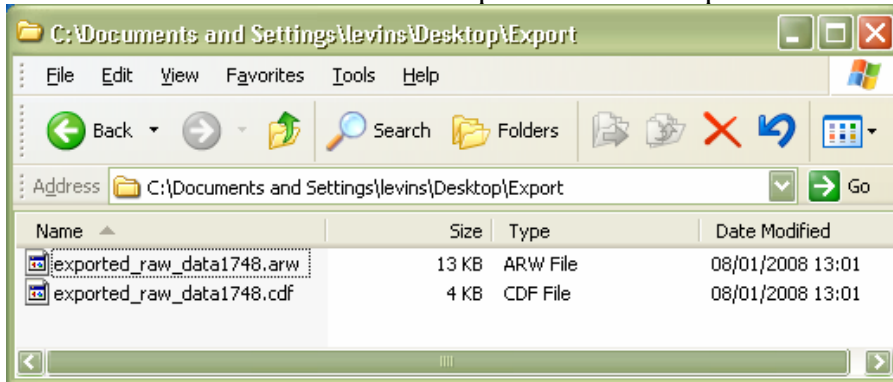
Go to Browse Project and select the 2D data for export -> Tools -> Export



Select the appropriate Export Method and click OK.

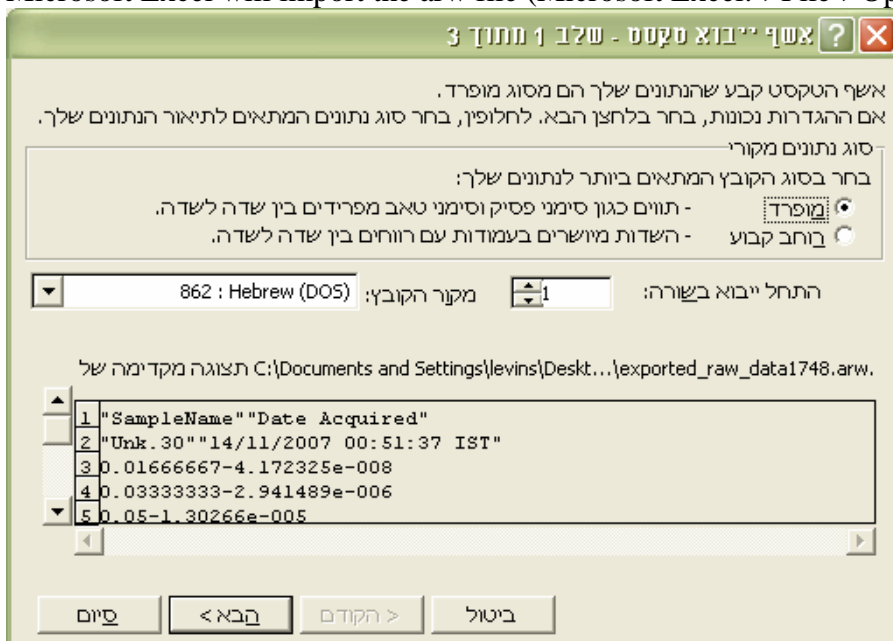


The files are created in the location specified in the Export Method.



The *cdf* file and the *arw* file.

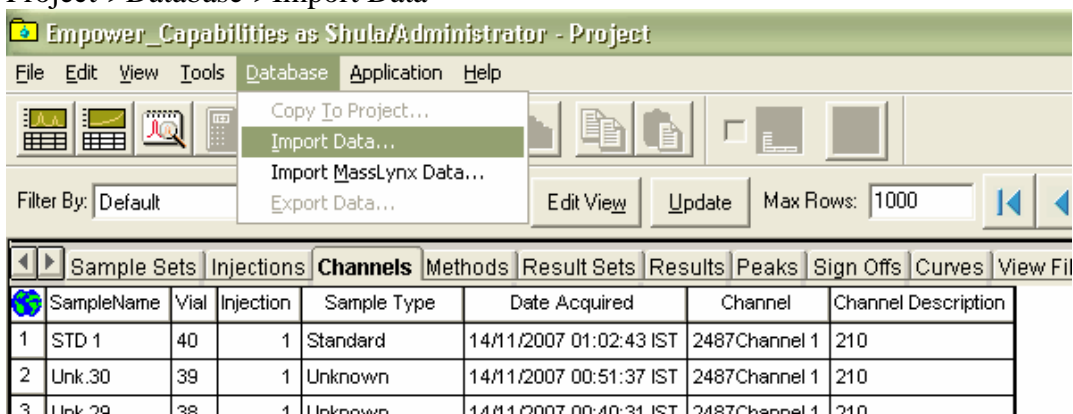
Microsoft Excel will import the *arw* file (Microsoft Excel:->File->Open (select the option *all files*):



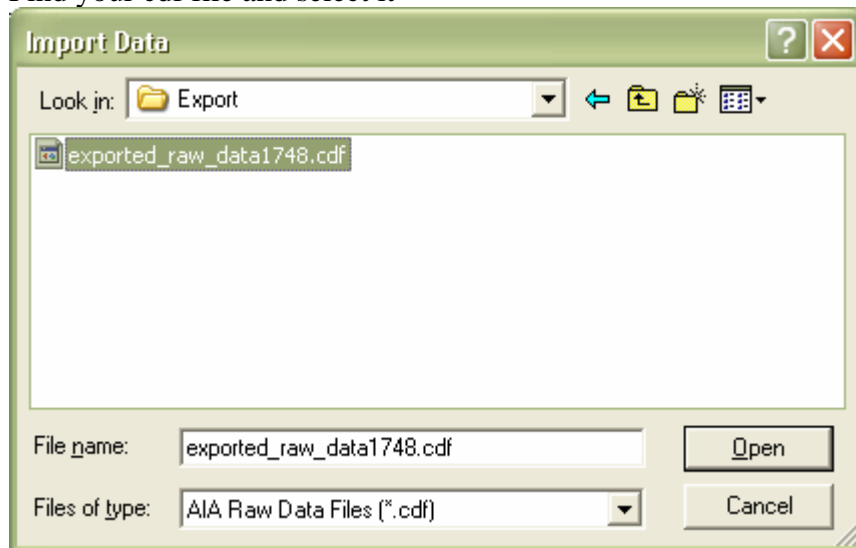
Follow the wizard to the end.

All other chromatographic data software will import the *cdf* file.

Empower can also import *cdf* files from any other chromatographic software. Go to the Browse Project->Database->Import Data



Find your cdf file and select it



It will be imported with its instrumental information.