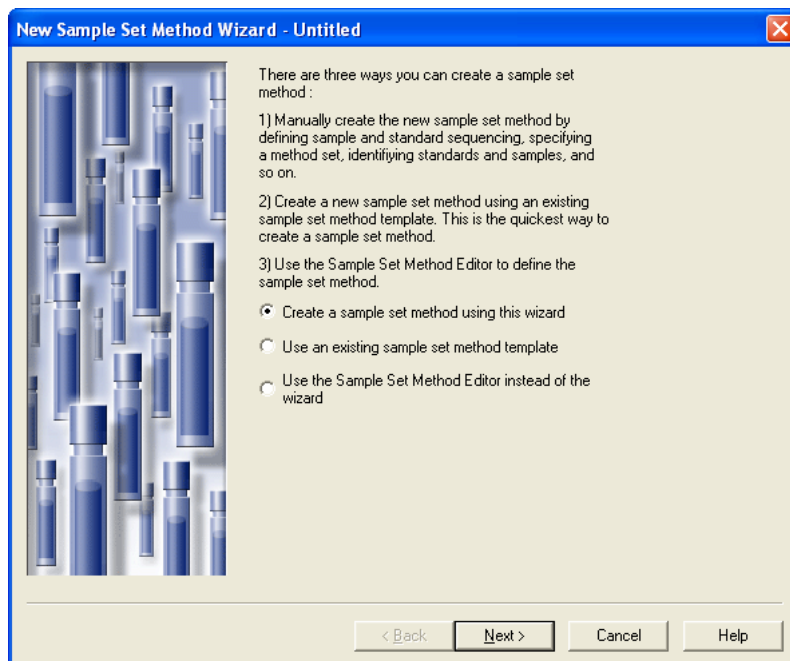


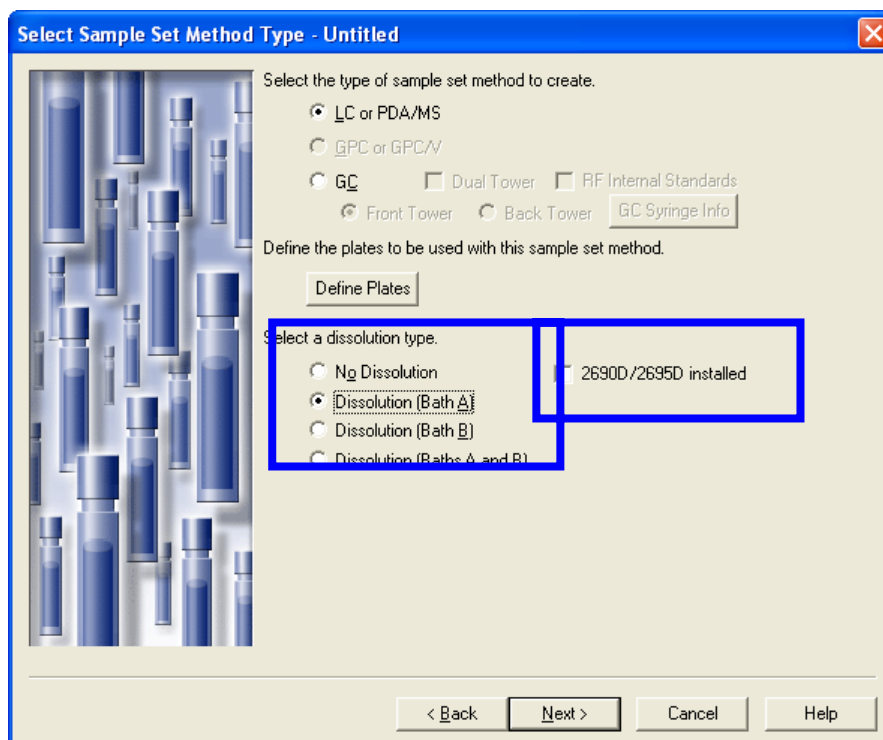
Running Dissolution Sample Sets in Empower for processing only

Create a new sample set using the wizard or templates only! You can use existing sample set method that was created with such wizard previously.

Click on the wizard icon to start a New Sample Set:



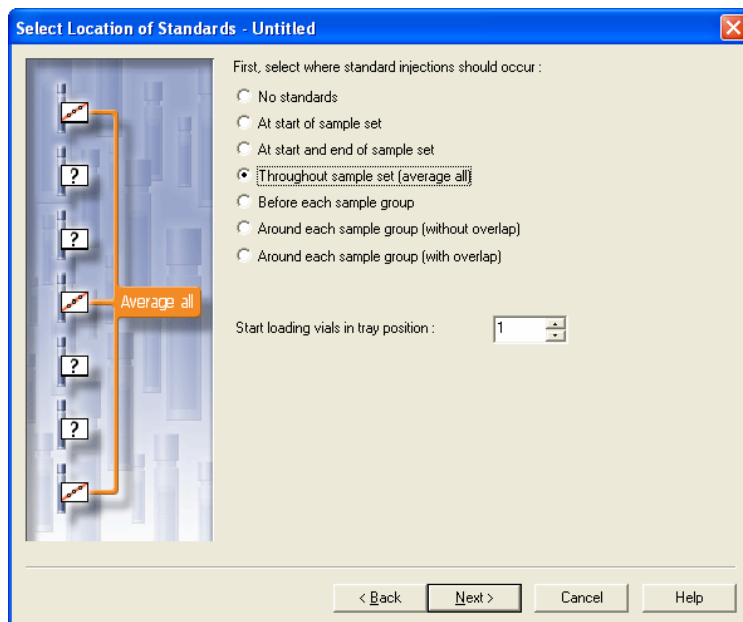
Click Next:



Select the Dissolution option either bath A or bath B or both, depends on your work. Do not check the HPLC control option unless you are going to run the automated Waters' dissolution 2690/5D system.

Click *Next*

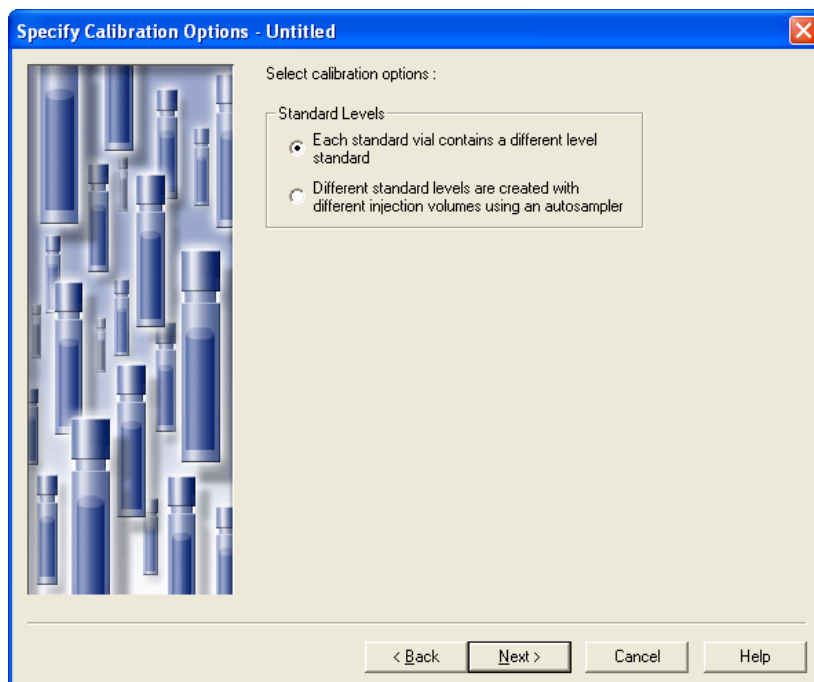
The next window refers to the arrangement of standards around the sample groups, NOT at the CALIBRATION or the SYSTEM SUITABILITY steps:



For calibration throughout the work using all the standards for calibration select the 4th option.

Click *NEXT*

Again, the next screen is for information of the standards across the sample set between the sample groups:



Fill in the proper details in the next screens and click *NEXT* to advance from one to another:

Describe Standard Bracket - Untitled

Next, describe your standard bracket.

Standard Information

Number of standard vials in each group: 1

Number of levels in each standard group: 1

Number of injections per vial: 1

Injection volume: 10.0

Run time: 10.00

Method Set

Select: Prednisone_Method_Set

Create New

Options ...

Average all

< Back Next > Cancel Help

Bath A: Setup - Untitled

Enter the range of vessels to use in this bath. 1-8

Enter vessel numbers and/or vessel ranges separated by commas. For example: 1,3,5-8


Name Dilute HC

Enter a descriptive name for the dissolution media.

Enter the initial volume of media in each vessel. 900.00 mL

< Back Next > Cancel Help

Bath A: Transfer - Untitled




Enter the volume removed on each transfer. mL (Removed Volume)

Enter the volume of media replaced on each transfer. mL (Replaced Volume)

< Back Next > Cancel Help

Enter the transfer times of the dissolution profile and the first vial of the *sample*:

Bath A: Samples - Untitled



Enter the position of the first vial.

Enter the times at which to transfer samples.

	Dissolution Transfer Times
1	20.00
2	30.00
3	40.00
4	50.00

Enter the total duration of the dissolution test. min

Do you want to perform an infinity test? Perform Infinity Test for min

< Back Next > Cancel Help

Fill in the necessary information also in the next screen. IT IS IMPORTANT TO FILL IN THE COMPONENT/S OTHERWISE THERE WILL NOT BE ANY CALCULATION.

Bath A: Components - Untitled

Method Set
Select: Prednisone_Method_Set

Select the dissolution final report method.
dissolution

Enter information on components of interest.

Dissolution Component Name	Dissolution Claimed Amount	Dissolution Q Factor Minutes	Dissolution Q Factor Percent
1 Prednisone	100.000000	50.0	50

< Back Next > Cancel Help

Fill in further dissolution details

Bath A: Operation - Untitled

Enter the bath temperature.
37.0 °C

Enter the apparatus speed.
75.0 RPM

< Back Next > Cancel Help

Fill the unknown information in the following screen:

Bath A: Sample Info - Untitled

Next, describe your samples :

Sample Information

Number of samples : 32

Number of injections per vial : 1

Injection volume : 10

Run time : 10.00

Maximum # of samples per group : 8

Options ...

< Back Next > Cancel Help

Fill in the standards and unknown's names and suffix's

Bath A: Custom Field Labels - Untitled

How should your standards be identified?

SampleName : Std

Incrementing Prefix:

Incrementing Suffix : 001

How should your samples be identified?

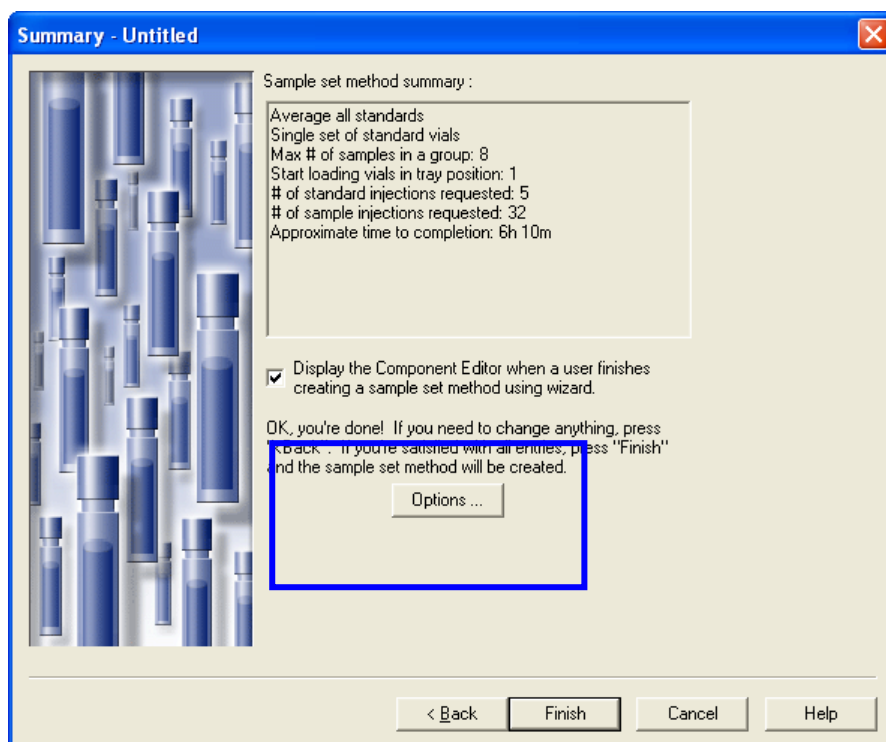
SampleName : Unk

Incrementing Prefix:

Incrementing Suffix : 001

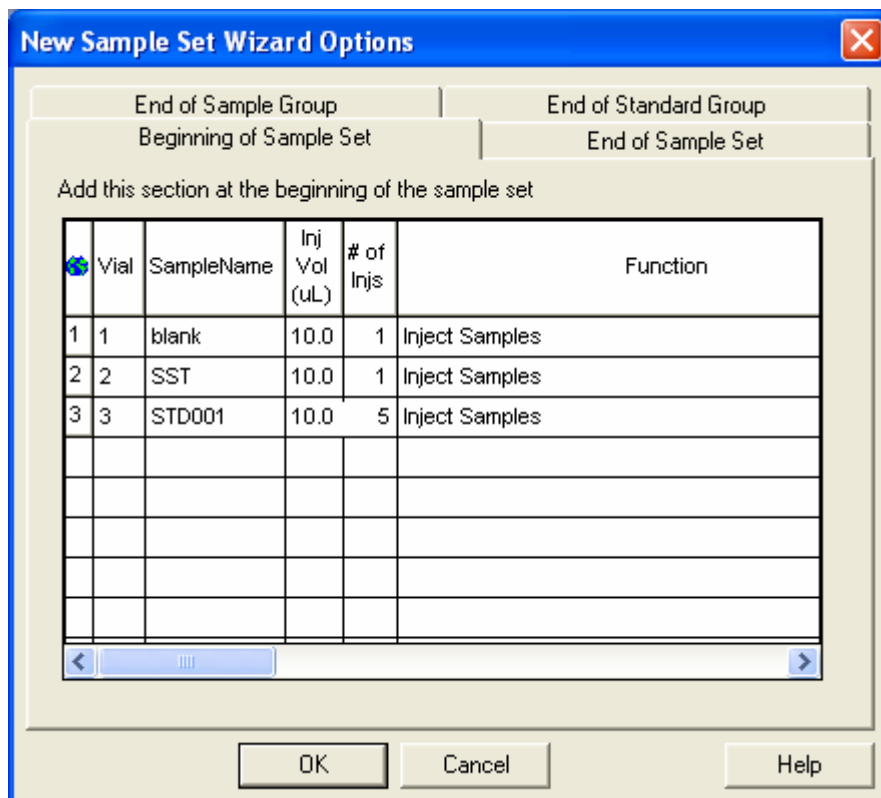
< Back Next > Cancel Help

The next screen is the summary screen:

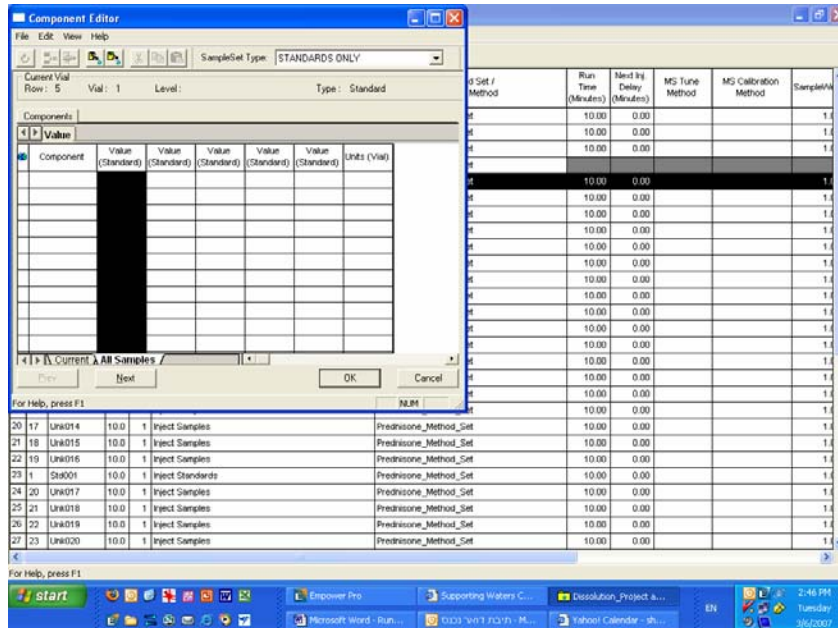


Click in the OPTIONS for customization of the sample set:

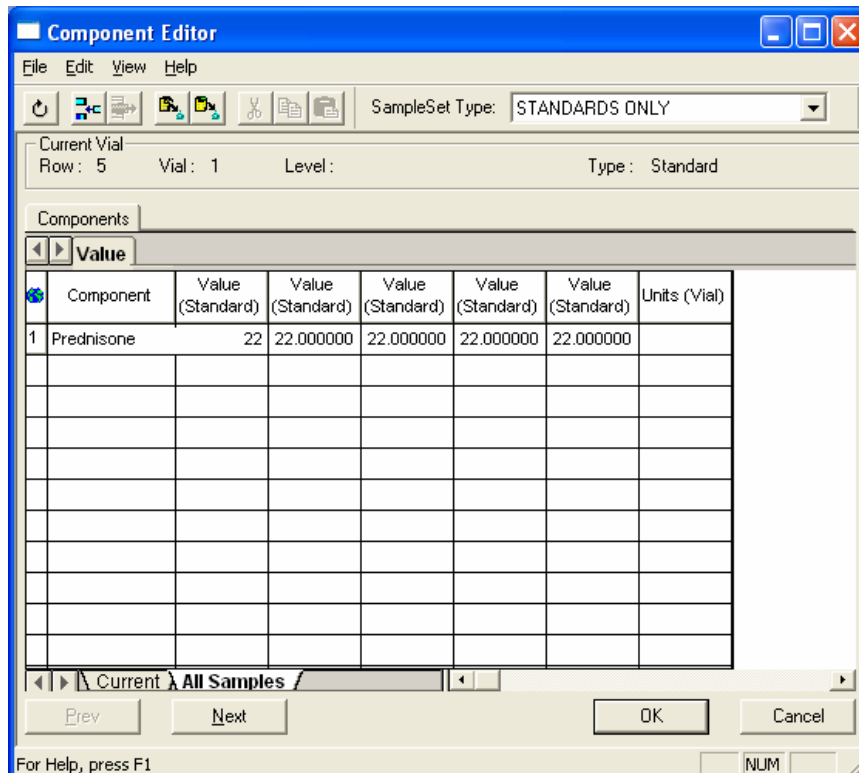
For example: the beginning of the sample set:



Click on FINISH and the following screen will be obtained, the sample set with the "Component Editor" screen open for editing:



Fill in the standards information as in normal quantitative work:



Click OK

The sample set is ready.

If you need to revise it, click on EDIT->DISSOLUTION

The screenshot shows the 'Sample Set Method Editor' window. The table contains the following data:

	Function	Method Set / Report Method	Run Time (Minutes)	Next Inj. Delay (Minutes)	SampleWeight	Dilution
1		Prednisone_Method_Set	10.00	0.00	1.0000	1.0000
2		Prednisone_Method_Set	10.00	0.00	1.0000	1.0000
3		Prednisone_Method_Set	10.00	0.00	1.0000	1.0000
4		Prednisone_Method_Set				
5		Prednisone_Method_Set	10.00	0.00	1.0000	1.0000
6		Prednisone_Method_Set	10.00	0.00	1.0000	1.0000
7		Prednisone_Method_Set	10.00	0.00	1.0000	1.0000
8		Prednisone_Method_Set	10.00	0.00	1.0000	1.0000
9		Prednisone_Method_Set	10.00	0.00	1.0000	1.0000
10		Prednisone_Method_Set	10.00	0.00	1.0000	1.0000
11	Unk006	10.0	1	Inject Samples		
12	Unk007	10.0	1	Inject Samples		
13	Unk008	10.0	1	Inject Samples		
14	Std001	10.0	1	Inject Standards		
15	Unk009	10.0	1	Inject Samples		
16	Unk010	10.0	1	Inject Samples		
17	Unk011	10.0	1	Inject Samples		
18	Unk012	10.0	1	Inject Samples		
19	Unk013	10.0	1	Inject Samples		
20	Unk014	10.0	1	Inject Samples		

Go tab by tab to change parameters.

The screenshot shows the 'Bath A: Setup' dialog box with the following fields and options:

- Tab: Bath A: Setup
- Field: Enter the range of vessels to use in this bath. Value: 1-8
- Field: Enter vessel numbers and/or vessel ranges separated by commas. For example: 1,3,5-8
- Field: Name. Value: Dilute HC
- Field: Enter the initial volume of media in each vessel. Value: 900.00 mL
- Buttons: OK, Cancel, Help